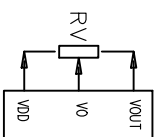
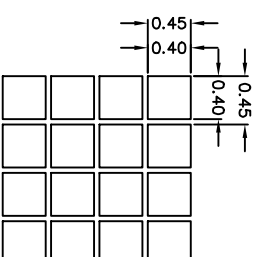
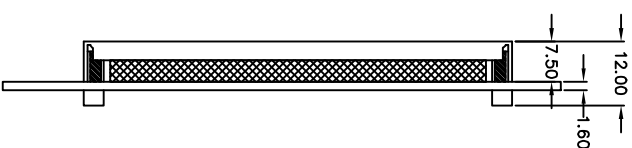
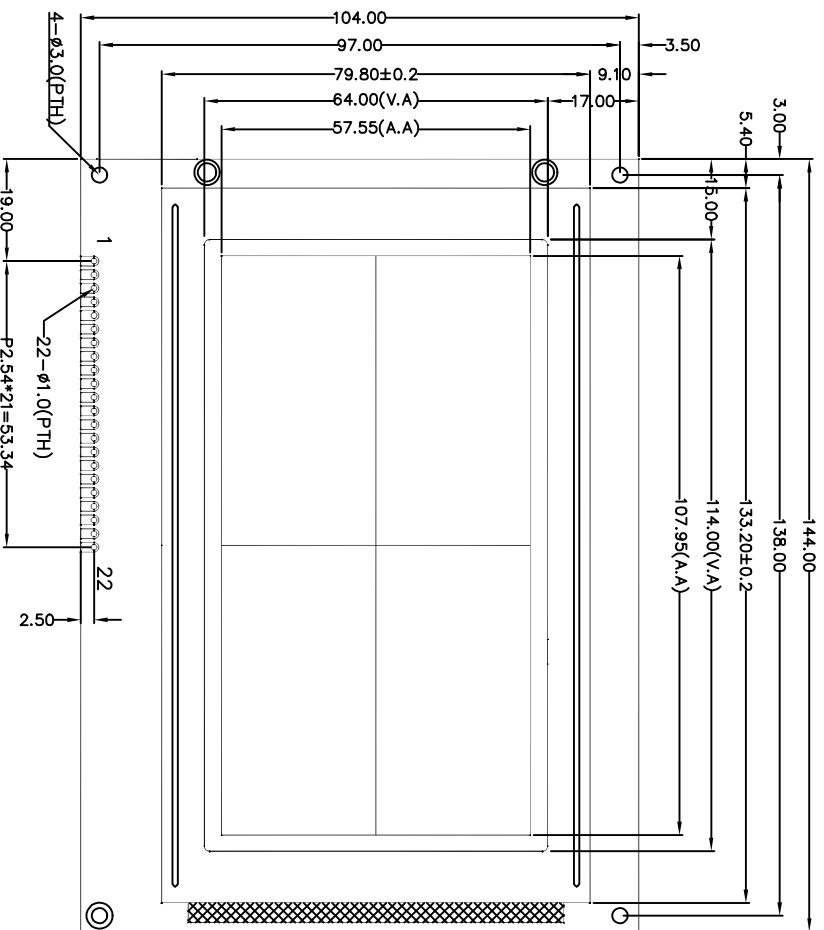


Customer approval :



1	2	3	4	5	6	7	8	9	10	~	17	18	19	20	21	22
FG	VSS	VDD	V0	/WR	/RD	/CE	C/D	/RST	DB0	~	DB7	NC	YOUT	BLA	INT	BUSY

SPECIFICATION:

- 1). Driving: Duty:1/128, Bias:1/12, Vdd:5.0V, Vlcd/V0:18V
- 2). VIEWING DIRECTION: 6 O'CLOCK
- 3). Display mode: STN/Negative/Transmissive/BLUE
- 4). Operating temp.: -20°C~+70°C
- 5). Storage temp.: -30°C~+80°C
- 6). Control IC: RA8822P1N-S(Or Compatible)
- 7). BACKLIGHT: Edge,LED White
- 8). DIMENSIONS WITH MARK "*" ARE IMPORTANT WITH MARK "(") ARE REFERENCED
- 9). All the raw materials are RoHS compliant

REVISION RECORD		REV	DRAWING NO.		DATE
First issue		V3.1	SYB240128AZK/31-5C88LN788-B5N1		2012/02/27
APPROVED BY		CHECKED BY	DRAWING BY		UNIT:
Liu		Francis	Luoxian		mm
2012/02/27		2012/02/27	2012/02/27		PAGE
					1/1



深圳市三元晶科技有限公司
Shenzhen TCC LCD Hi-Tech Co., Ltd

GENERAL TOL: ± 0.2